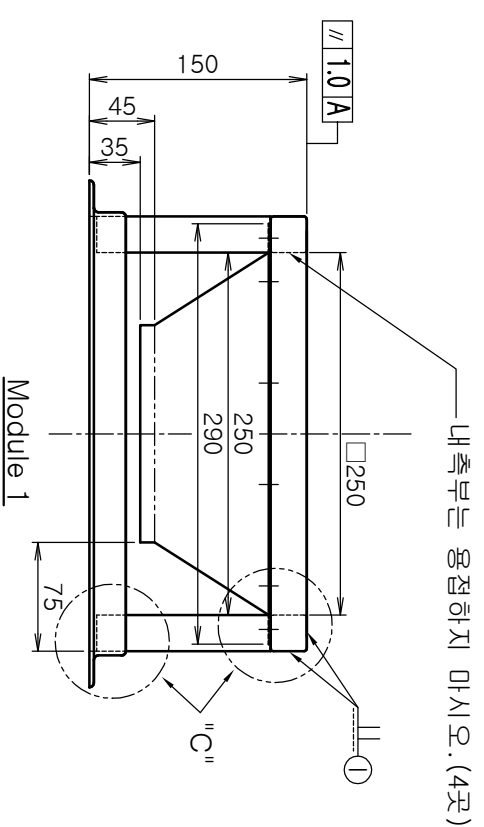
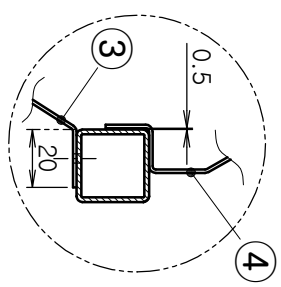


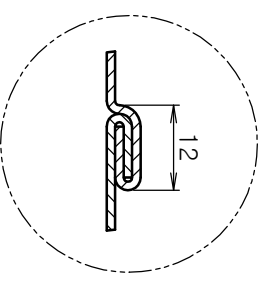
② + ③
Ø3.2 x 8 Blind rivet
(16개소)



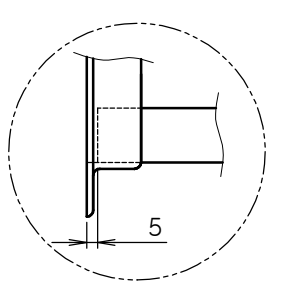
Module 1



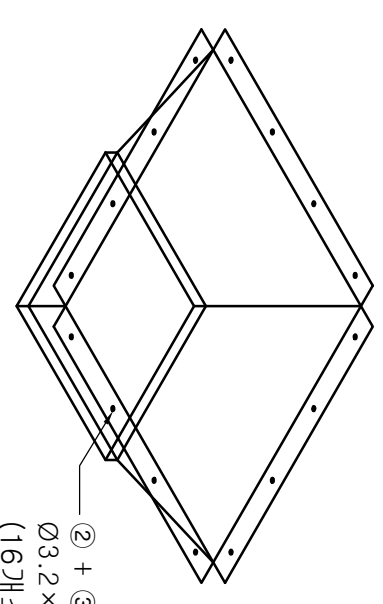
Section "A"



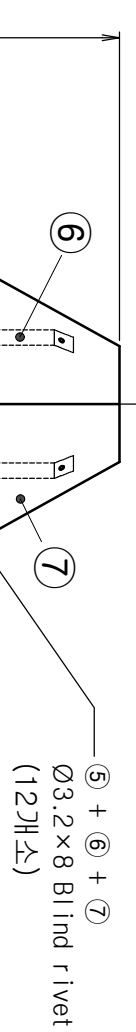
Section "B"



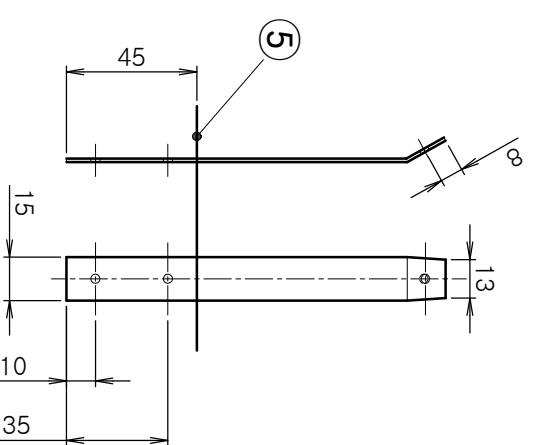
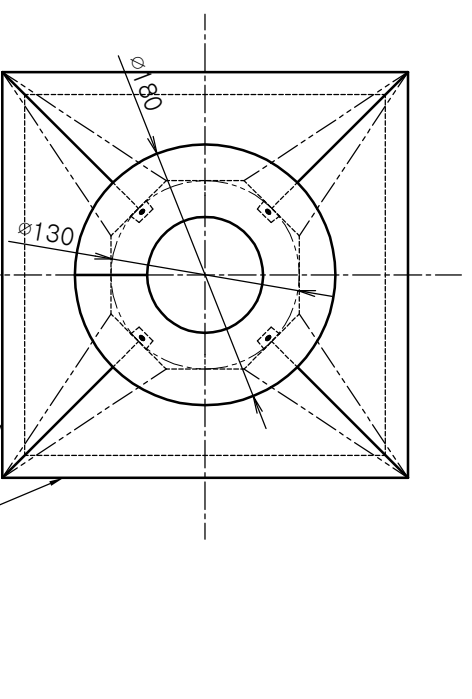
Detail "C"



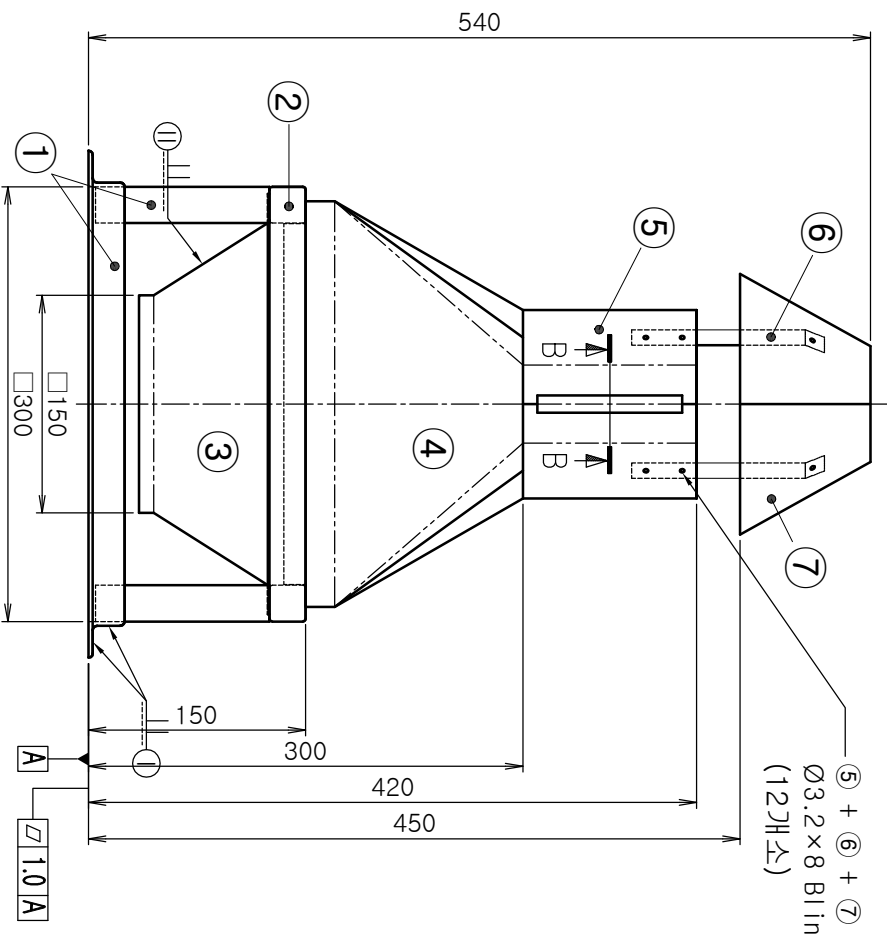
Detail "3"번 부품"



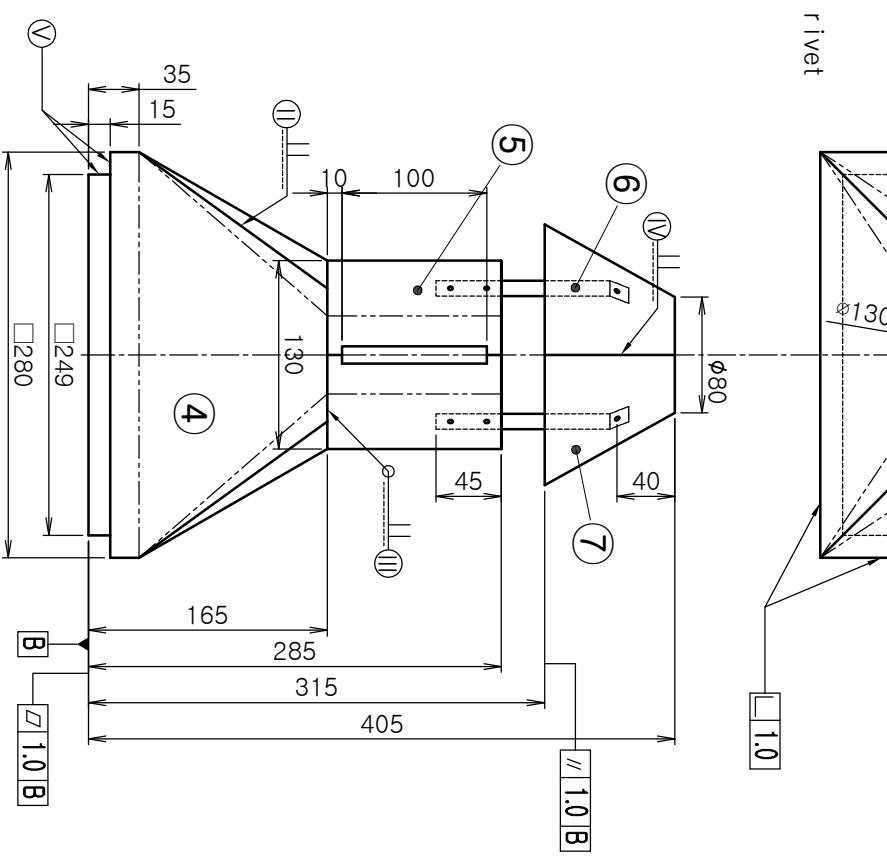
⑤ + ⑥ + ⑦
Ø3.2 x 8 Blind rivet
(12개소)



Detail "6"번 부품"



Assembly



Module 2

Note

1. 별도 지시사항이 없는 모든 치수 외곽(외경)기준.
2. 조립 끝단(모서리) 및 연결부 용접 피할 것.
3. 단속용접은 (용접개소 X 용접길이)로 적용
4. 용접적용
 - ① : 00₂ 단속용접 (4개소)
 - ①① : TIG 연속용접 (4개소)
 - ①①① : 00₂ 단속용접 (8 X 20)
 - ①①①① : TIG 연속용접 (용접부 폴리싱 작업)
5. ⑦ 면 정측부의 용접부는 그라인딩 작업 적용
6. 소재 적용 (아래의 소재 외에는 Steel t1.2 적용)
 - ① : Angle (t3 x 25 x 25)
 - ② : SQ Pipe (t1.6 x 25 x 25)
 - ⑦ : SUS301LT (t1.0)
7. Module1 + Module2는 회전 조립 가능